

1. EasyBuilder Pro Installation and Startup Guide

This chapter explains how to install EasyBuilder Pro.

- 1.1. Installation Requirements..... 1-2
- 1.2. Steps to Install EasyBuilder Pro 1-3
- 1.3. Software Update Reminder 1-7

1.1. Installation Requirements

Software:

Visit Weintek Labs, Inc.'s website at <http://www.weintek.com> and download the installation package which include the following languages: Simplified Chinese, Traditional Chinese, English, Japanese, German, Italian, Korean, Spanish, Russian, French, Polish, and Turkish. The latest updates can be downloaded too.

Operating System:

Windows® 7 SP1 (32bit / 64bit)

Windows® 8 (32bit / 64bit)

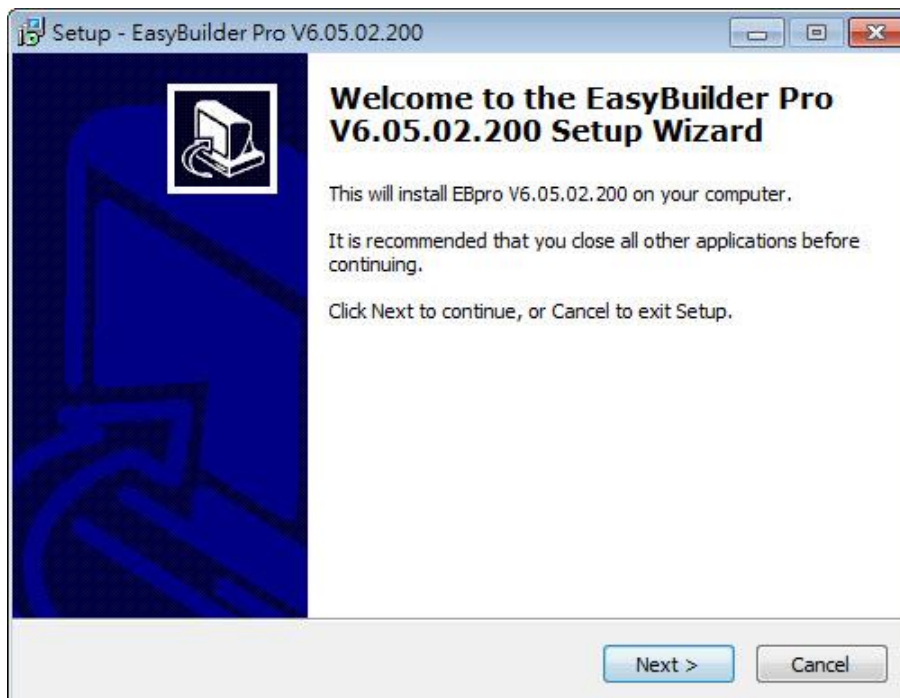
Windows® 8.1 (32bit / 64bit)

Windows® 10 (32bit / 64bit)

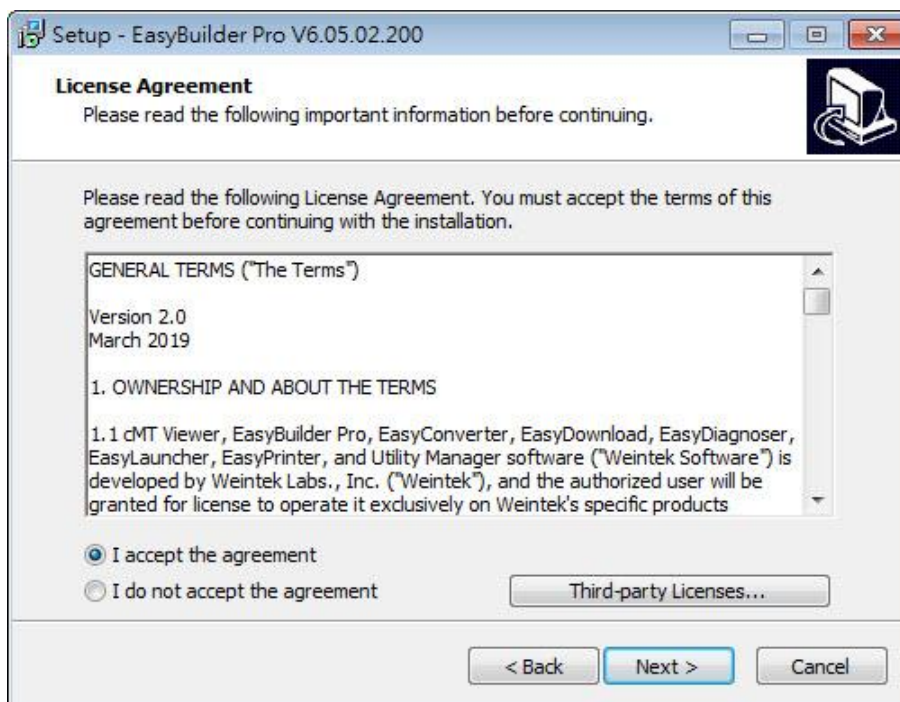
Windows® 11 (32bit / 64bit)

1.2. Steps to Install EasyBuilder Pro

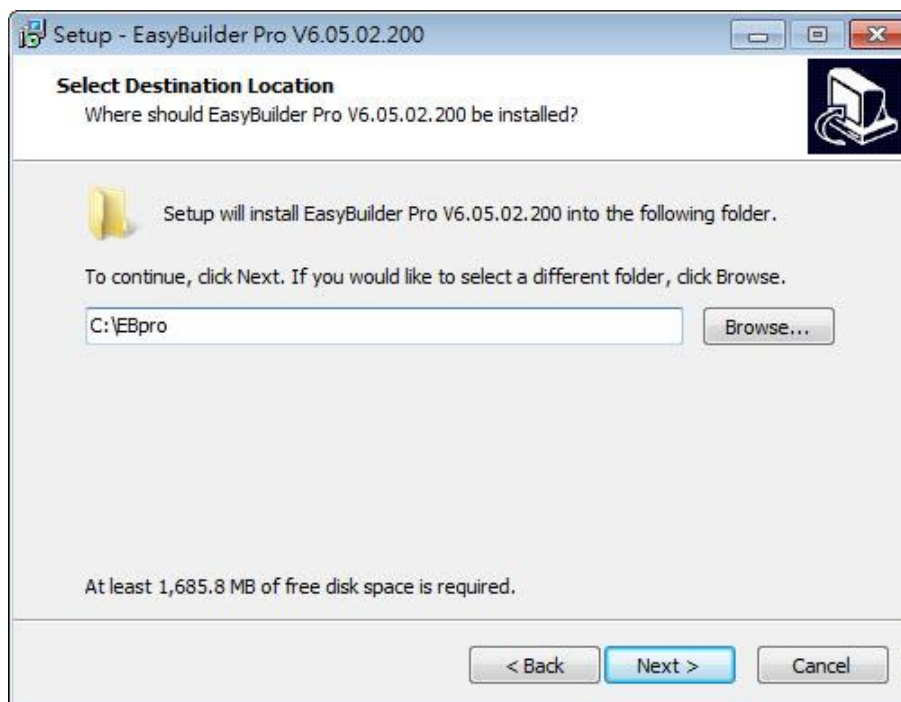
1. Click [Install] and select the language for the installation process, and then click [Next].



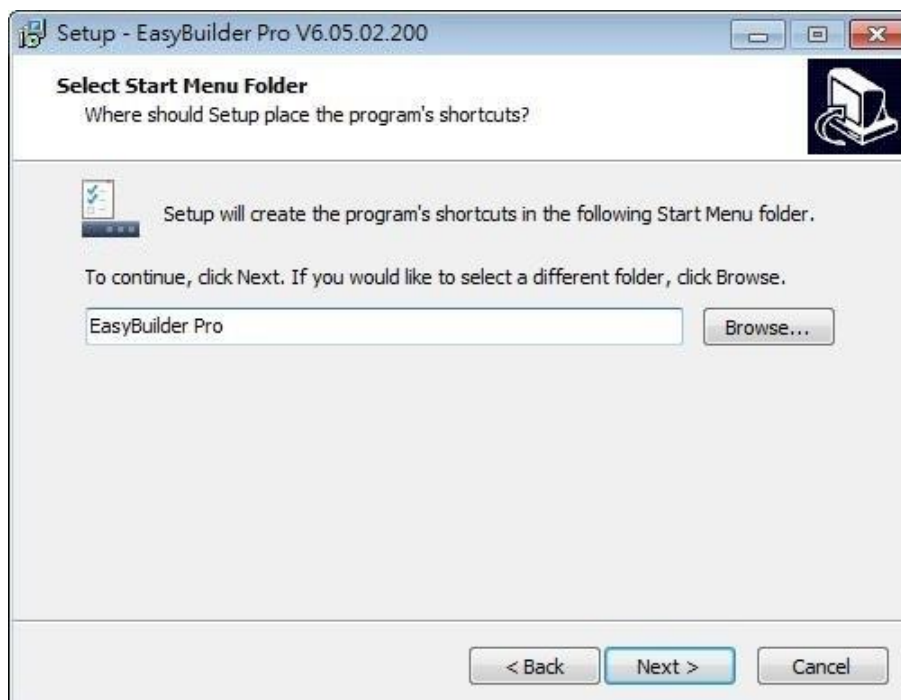
2. If there is a previous version of EasyBuilder Pro on the PC, please remove it before installation.
3. Please read and accept the License Agreement before continuing.



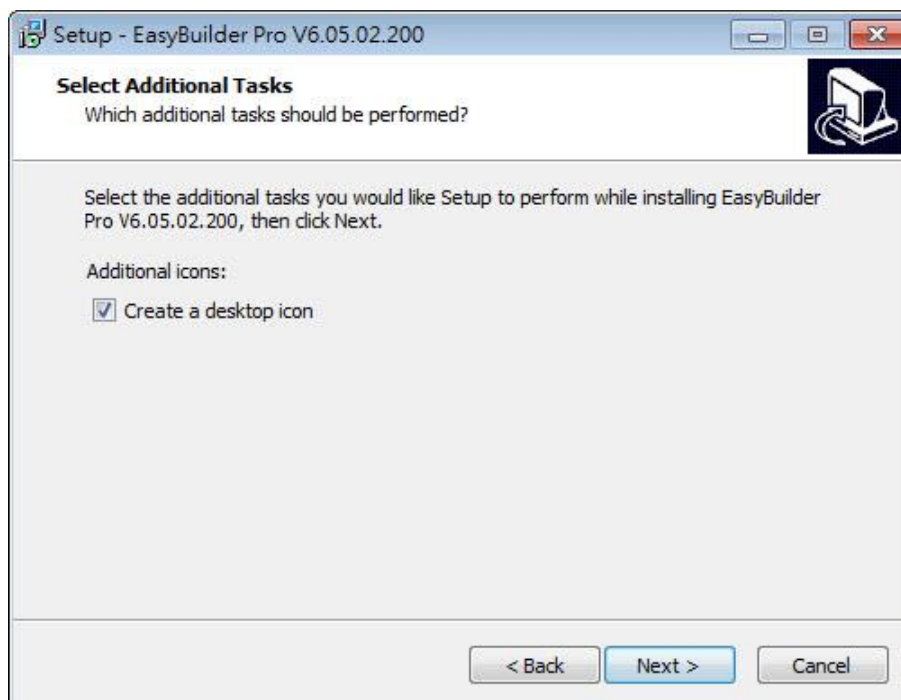
4. Select a folder for EasyBuilder Pro installation, or use the default folder. Click [Next].



5. Select a start menu folder, or use the default folder. Click [Next].



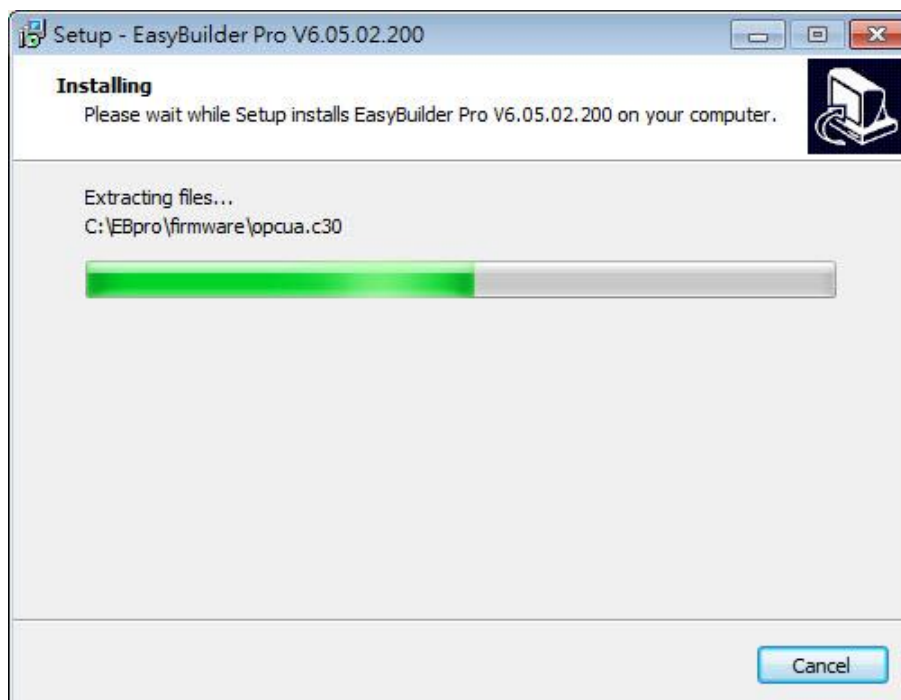
6. Select additional tasks, for example: [Create a desktop icon]. Click [Next].



7. Confirm all setting. To change the setting, click [Back]. To start installation, click [Install].



8. Installation in progress.



9. Click [Finish] to complete the installation.



10. The EasyBuilder shortcut can be found in [Start] » [All Programs] » [EasyBuilder Pro].

The description of each item in EasyBuilder Pro menu:

Installed file	Description
Administrator Tools	Saves User Accounts, USB Security Key, e-Mail SMTP Server Setting, e-Mail Contacts to an external device (USB drive or SD card) so that the data become

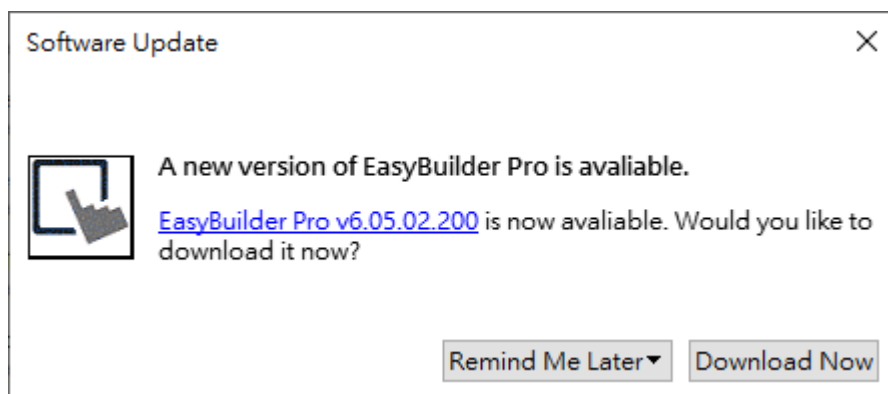
	portable and can be imported to HMI.
cMT Viewer	Supports access to cMT / cMT X Series HMI via network, for operating cMT / cMT X Series HMI on PC.
Easy Access	Supports access to remote HMI by connecting EasyAccess server over Internet.
EasyBuilder Pro	EasyBuilder Pro project editor.
EasyConverter	Conversion tool for Data Sampling and Event Log.
EasyDiagnoser	Monitoring and debugging tool operated on HMI.
EasyPrinter	Allows exporting data to a remote server on PC via Ethernet, realizing remote printing / backup.
EasySimulator	Executes simulation.
EasySystemSetting	Allows updating hardware system settings by using SD card or USB drive.
EasyWatch	An easy to use debugging and remote monitoring tool running on PC that allows monitoring or setting HMI and PLC addresses and executing macro.
Recipe Editor	Tool for setting the format of Recipe data. Users can open Recipe data or the data in the External Memory.
Release Note	Software release notes.
UtilityManagerEx	EasyBuilder Pro management tool.

Note

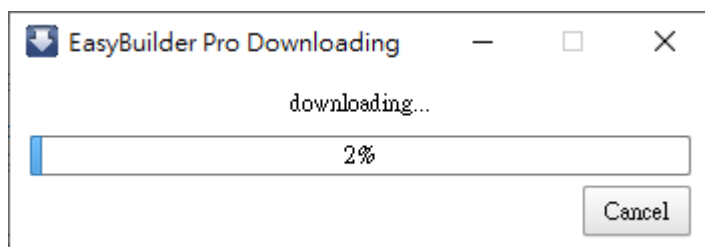
- Certain HMI supports downloading/uploading projects via USB cable. After installing EasyBuilder Pro, the USB driver will be automatically installed. A message saying "Windows can't verify the publisher of this driver" may show, please continue anyway. After installing the USB driver, open [Computer Management] » [Device Manager] to check if installation succeeded.

1.3. Software Update Reminder

After launching EasyBuilder Pro, the system will check whether the latest version has been installed, and show a reminder dialog if there is a newer version.



After clicking [Download Now], the latest version of EasyBuilder Pro will be downloaded to a temporary folder, and a progress bar is shown as below. After download, please follow the steps explained in the previous section to install EasyBuilder Pro.



Note

- In [File] » [Preferences] » [Misc] an option can be selected to receive a notification when a new version of EasyBuilder Pro is available.

Users can open File » About in EasyBuilder Pro to see current version and check for updates.

